

William Byrd

The Earl of Salisbury

Arranged for Guitar Duet
by
Andrew Forrest

*In the event of a public performance, please include
the arranger's name on the programme.*

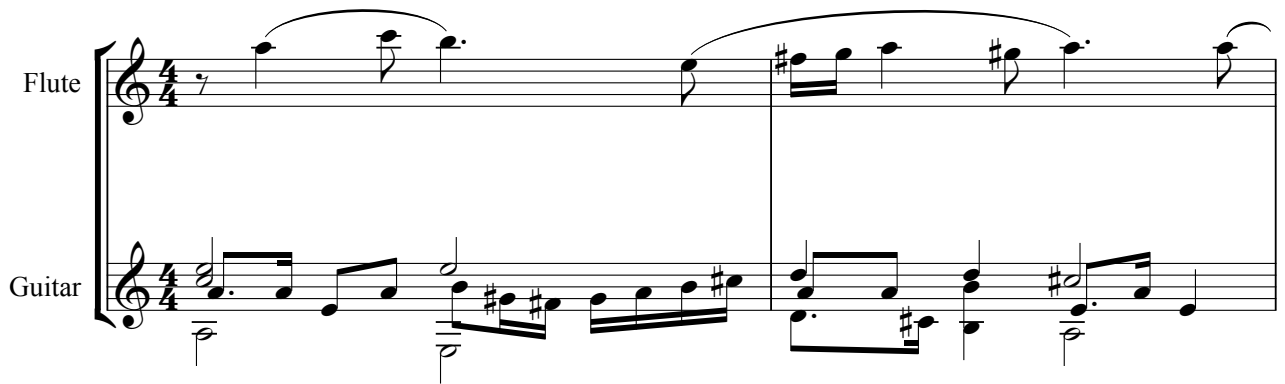
<http://www.forrestguitarembles.co.uk>

Pavan - The Earl of Salisbury

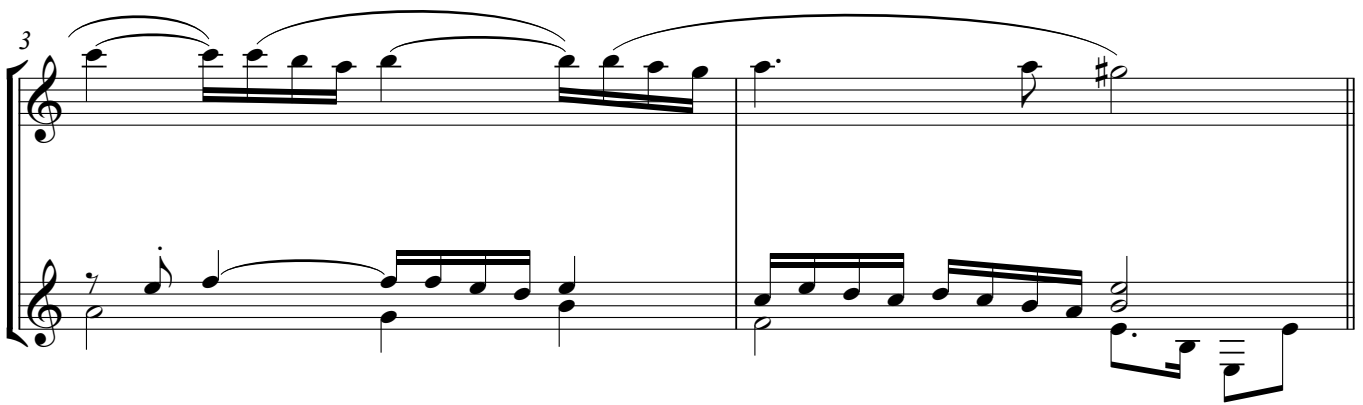
William Byrd

Flute

Guitar

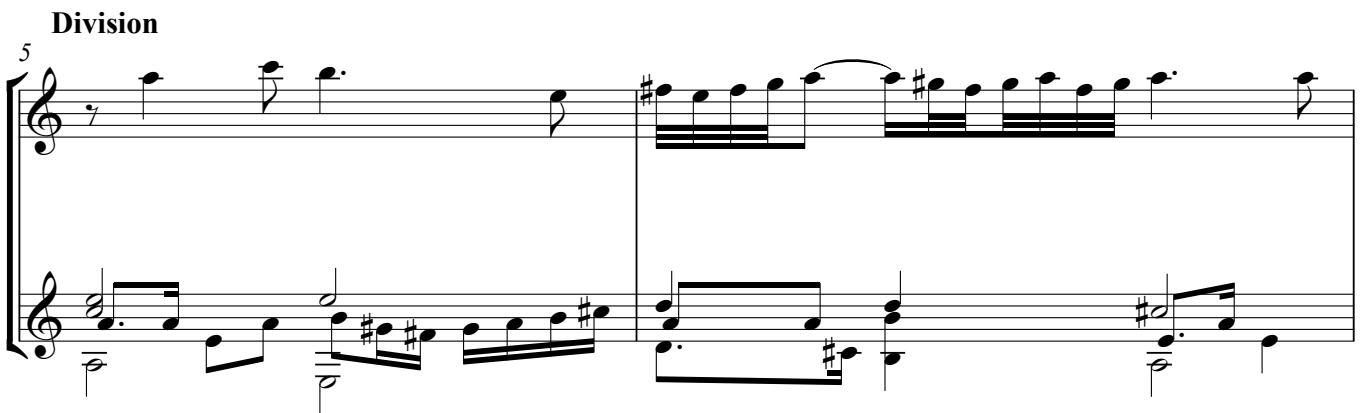


3

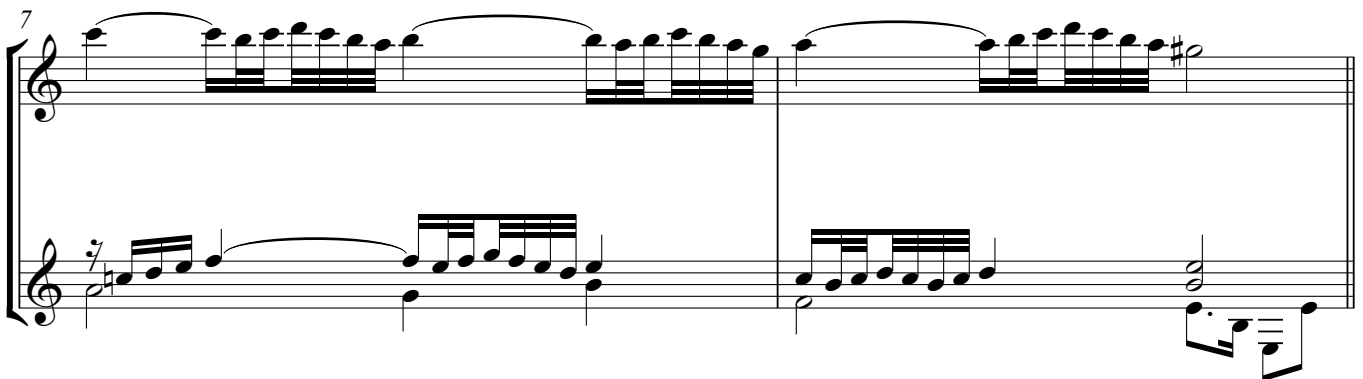


Division

5



7



9

Musical notation for measures 9 and 10. The upper staff features a melodic line with a long slur over measures 9 and 10. The lower staff provides harmonic accompaniment with chords and moving lines.

11

Musical notation for measures 11 and 12. The upper staff continues the melodic line with a slur. The lower staff shows harmonic accompaniment, including a key signature change to one sharp (F#) in measure 12.

Division

13

Musical notation for measures 13 and 14, labeled as the 'Division' section. The upper staff shows a melodic line with a slur. The lower staff provides harmonic accompaniment.

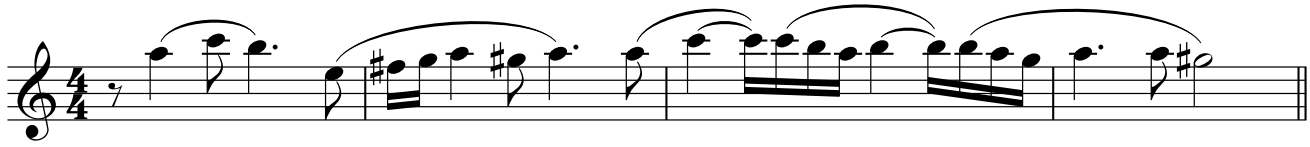
15

Musical notation for measures 15 and 16. The upper staff features a complex melodic line with many slurs. The lower staff provides harmonic accompaniment, ending with a double bar line and repeat dots.

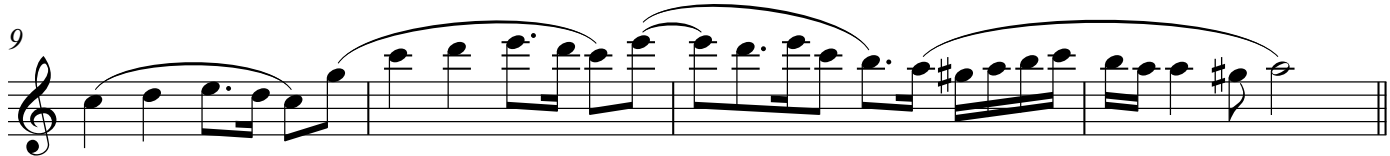
Flute

Pavan - The Earl of Salisbury

William Byrd



5 **Division**



Division

